



GMT MONTHLY MEMBERSHIP PROGRESS REPORT

Results as of: 2/29/2020

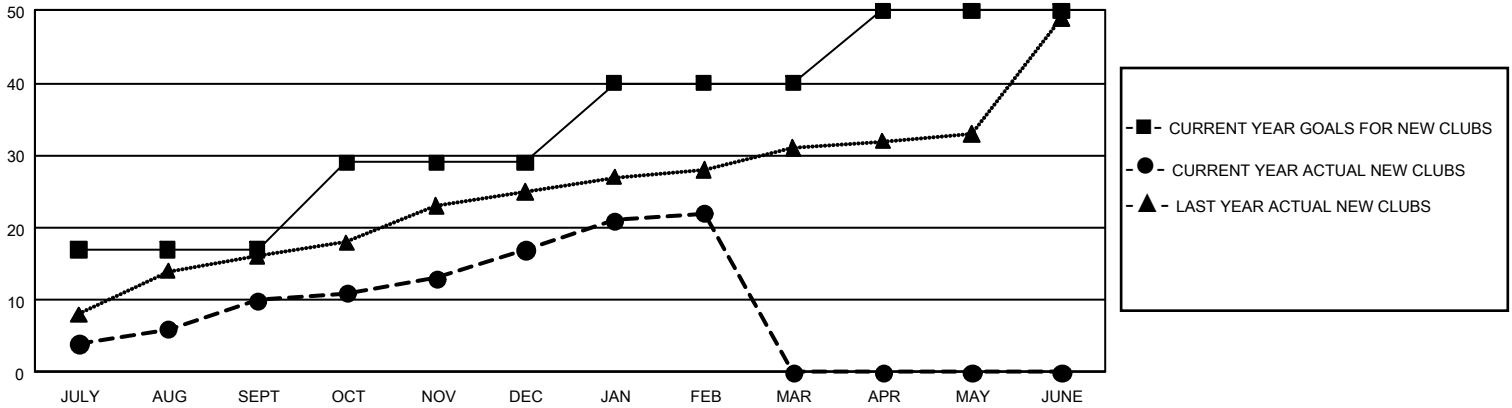
GMT Constitutional Area 6, Group H

GMT: OPEN

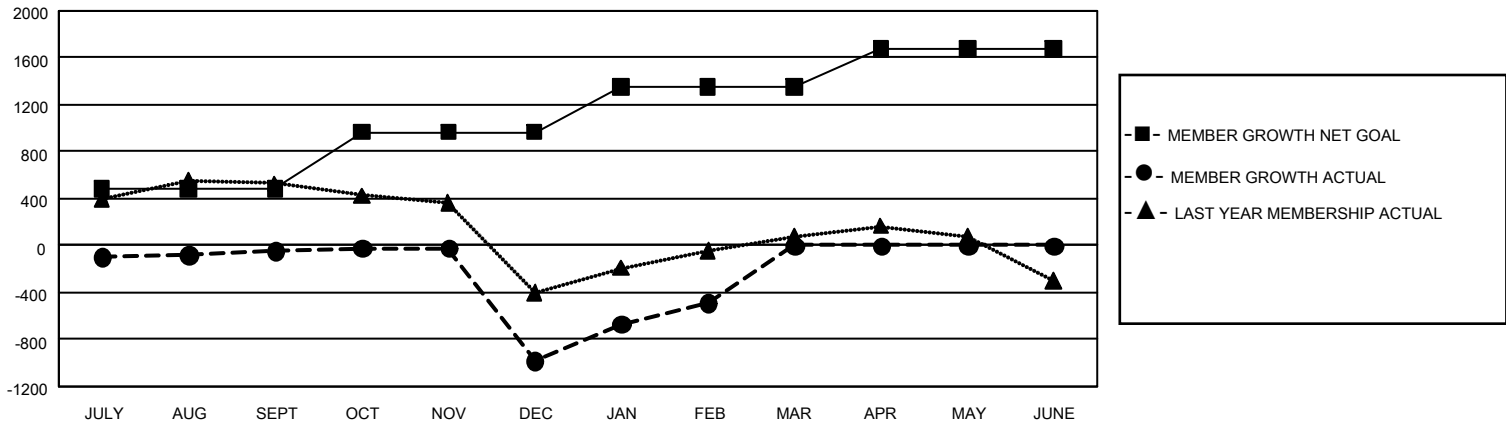
REPORT DOES NOT INCLUDE CLUBS IN UNDISTRICTED AREAS.

Clubs				Members			
RESULTS FOR 2019-2020				RESULTS FOR 2019-2020			
QUARTER	NEW CLUB GOAL	NEW CLUBS	DROPPED CLUBS	QUARTER	MEMBER GROWTH NET GOAL	MEMBER GROWTH ACTUAL	DROPPED MEMBERS ACTUAL (including transfers)
JULY/AUG/SEPT	51	10	4	JULY/AUG/SEPT	1,455	713	690
OCT/NOV/DEC	36	7	30	OCT/NOV/DEC	1,440	451	1,374
JAN/FEB/MAR	33	5	1	JAN/FEB/MAR	1,155	866	246
APR/MAY/JUNE	30	0	0	APR/MAY/JUNE	975	0	0

GOALS AND ACTUAL NEW CLUBS CUMULATIVE



GOALS AND ACTUAL MEMBERS CUMULATIVE



DROPPED CLUBS: 35	336 CLUBS OF 685 ADDED 1 OR MORE NEW MEMBERS	GENDER DISTRIBUTION MALE 19,158 (81.43%) FEMALE 4,368 (18.57%)
DROPPED MEMBERS DECEASED 67 CLUB CANCELLED 699 OTHER 1,544 TOTAL 2,310	CLICK HERE FOR CUMULATIVE MEMBERSHIP DATA	TOTAL FAMILY UNIT MEMBERS 7,764 FAMILY MEMBERS PAYING HALF DUES 4,075